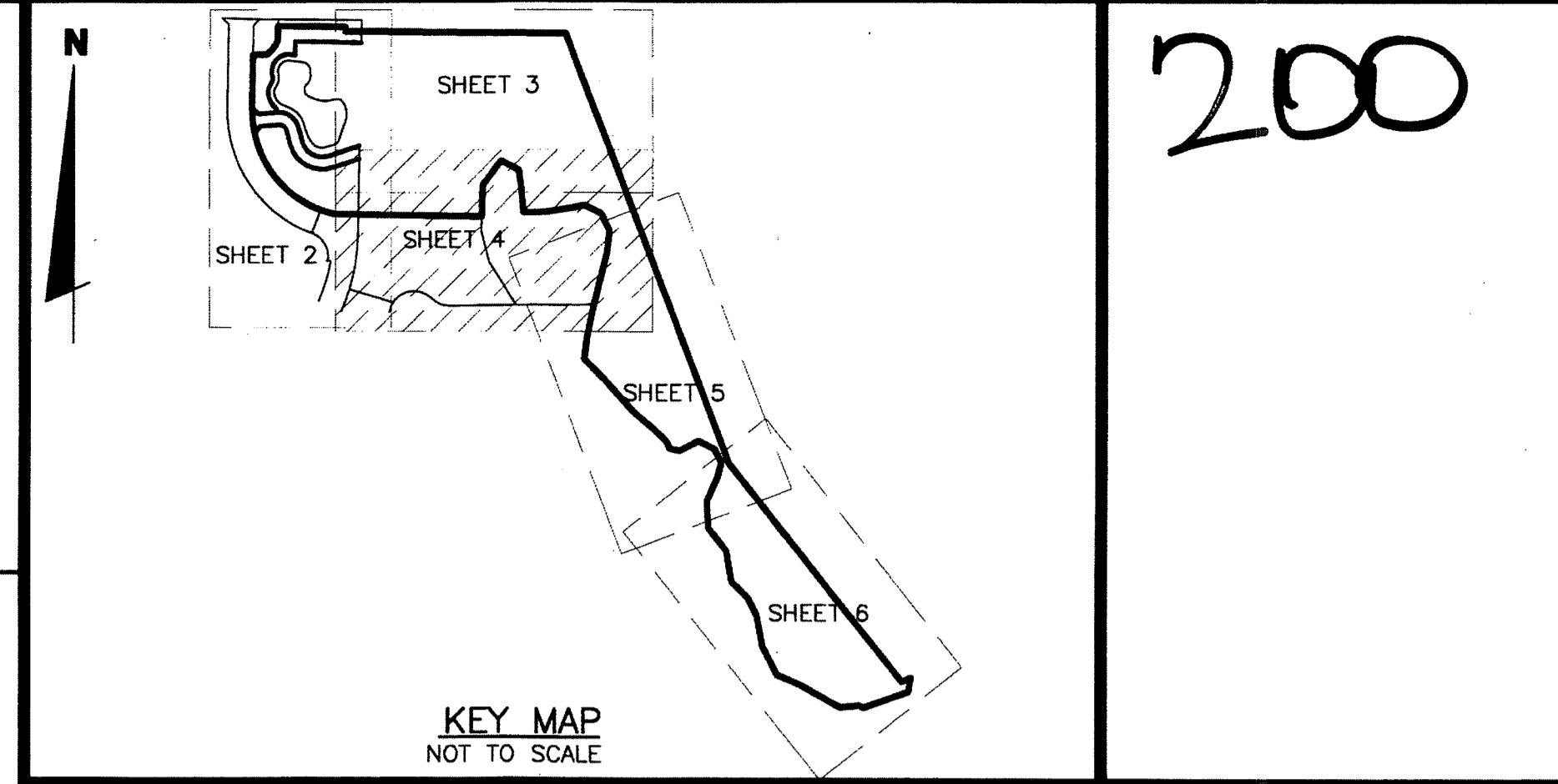
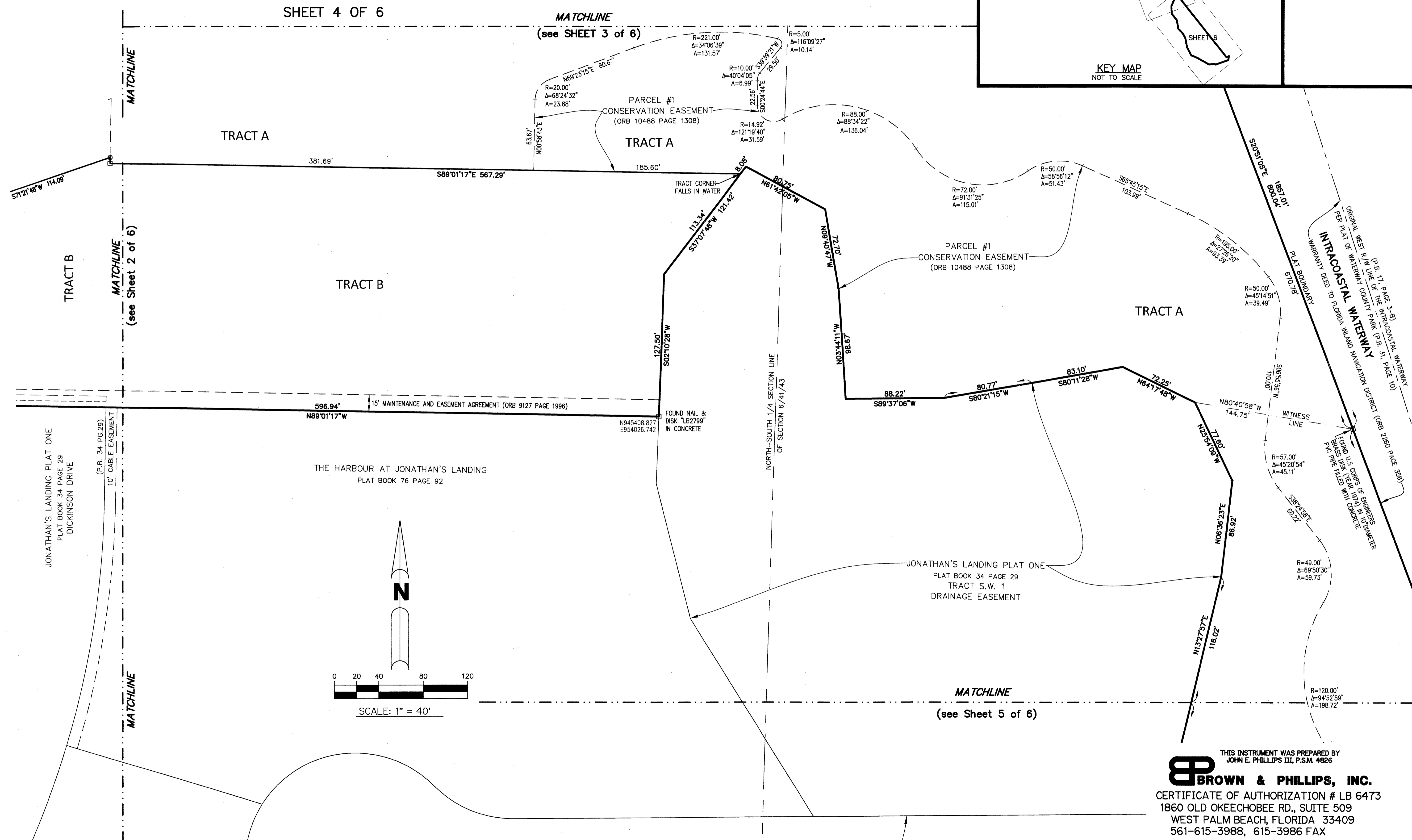


1000-883  
**WATERWAY PARK, A PORTION OF JONATHAN'S LANDING P.U.D.**

LYING IN SECTIONS 6 AND 7, TOWNSHIP 41 SOUTH, RANGE 43 EAST,  
 PALM BEACH COUNTY, FLORIDA, BEING A REPLAT OF ALL OF  
 WATERWAY COUNTY PARK, RECORDED IN PLAT BOOK 31, PAGE 10,  
 AND THE CIVIC CENTER AND PRIVATE BUFFER PARCELS OF  
 JONATHAN'S LANDING PLAT SIX, RECORDED IN PLAT BOOK 47, PAGE 10,  
 OF THE PUBLIC RECORDS OF PALM BEACH COUNTY, FLORIDA



200



THIS INSTRUMENT WAS PREPARED BY  
**BROWN & PHILLIPS, INC.**  
 CERTIFICATE OF AUTHORIZATION # LB 6473  
 1860 OLD OKEECHOBEE RD., SUITE 509  
 WEST PALM BEACH, FLORIDA 33409  
 561-615-3988, 615-3986 FAX